

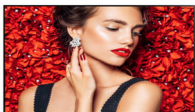


Philips Signage Solutions
D-Line Display

32"

Direct LED Backlight
Full HD

SignageSolutions



32BDL4031D

Inform. Effortlessly.

Smart, powerful 24/7 display.

Make it clear with a powerful Philips D-Line Professional Full HD Display. This responsive solution offers brilliant picture quality, simple control, and reliable connectivity.

Brilliant picture. Blazing processor speed.

- Full HD. Clear images. Crisp contrast
- IPS panel: rich color consistency from every angle
- Place in landscape or portrait orientation

Effortless setup. Total control.

- Operate, monitor and maintain with CMND & Control

Cost-effective system solution

- Energy-saving automatic backlight control
- FailOver ensures content is always playing

PHILIPS

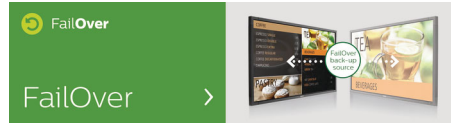
Highlights

CMND & Control



Run your display network over a local (LAN) connection. CMND & Control allows you to perform vital functions like controlling inputs and monitoring display status. Whether you're in charge of one screen or 100.

FailOver



From waiting room to meeting room, never show a blank screen. FailOver lets your Philips Professional Display switch automatically between primary and secondary inputs

ensuring content keeps playing even if the primary source goes down. Simply set a list of alternate inputs to be sure your business is always on.

Specifications

Picture/Display

- Diagonal screen size: 31.5 inch / 80 cm
- Panel resolution: 1920x1080p
- Optimum resolution: 1920 x 1080 @ 60 Hz
- Brightness: 400 cd/m²
- Contrast ratio (typical): 1100:1
- Dynamic contrast ratio: 500,000:1
- Response time (typical): 8 ms
- Aspect ratio: 16:9
- Viewing angle (H / V): 178 / 178 degree
- Pixel pitch: 0.36375 x 0.36375 mm
- Display colors: 16.7 Million
- Panel technology: IPS
- Picture enhancement: 3/2 - 2/2 motion pull down, 3D Combfilter, 3D MA deinterlacing, Motion compens. deinterlacing, Progressive scan
- Placement: Landscape (24/7), Portrait (24/7)

Connectivity

- Video input: Display Port 1.2 (x1), DVI-I (x 1), HDMI (x2)
- Audio input: 3.5 mm jack
- Audio output: 3.5mm jack
- External control: RJ45, RS232C (in/out) 2.5 mm jack, IR (in/out) 3.5 mm jack
- Video output: DisplayPort 1.2 (x1), DVI-I (x1)

Supported Display Resolution

Computer formats

Resolution	Refresh rate
1920 x 1200	60Hz
1920 x 1080	60Hz
1600 x 1200	60Hz
1440 x 900	60Hz
1366 x 768	60Hz
1360 x 768	60Hz
1280 x 800	60Hz
1280 x 768	60Hz
1024 x 768	60Hz
800 x 600	56, 60, 72, 75Hz
640 x 480	60, 67, 72, 75Hz

Video formats

Resolution	Refresh rate
1080i	50, 60Hz
1080p	50, 60Hz
720p	50, 60Hz
576i	50Hz
576p	50Hz

480i	60Hz
480p	60Hz

Convenience

- Screen saving functions: Pixel Shift
- Tiled Matrix: Up to 15 x 15
- Keyboard control: Lockable, Hidden
- Network controllable: RS232, RJ45
- Signal loop through: IR Loophrough, DVI, DisplayPort
- Picture in picture: PIP

Dimensions

- Bezel width: 10.8 mm (T/L/R), 15.7 mm (B)
- Set dimensions (W x H x D): 724.8 x 424.3 x 64.1 mm
- Set dimensions in inch (W x H x D): 28.54 x 16.7 x 2.52 inch
- VESA Mount: 200 x 200 mm M6
- Product weight: 6.15 kg
- Product weight (lb): 13.55 lb

Operating conditions

- Temperature range (operation): 5 ~ 40 °C
- Temperature range (storage): -10 ~ 50 °C
- MTBF: 50,000 hour(s)
- Altitude: 0 ~ 3000 m
- Humidity range (operation)[RH]: 10 ~ 80% (without condensation)
- Humidity range (storage) [RH]: 0 ~ 90% (without condensation)
- Relative humidity: 20 ~ 80 %

Power

- Consumption (On mode): 110W(max)
- Mains power: AC (100 ~ 240 V) , 2.5A
- Standby power consumption: <0.5 W
- Consumption (Typical): 60 W
- Energy Label Class: G

Sound

- Built-in speakers: 2 x 10W RMS

Accessories

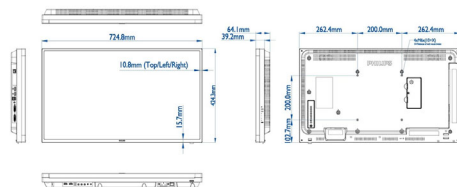
- Included accessories: AC Power Cord, RS232 cable, Remote Control, Batteries for remote control, Quick start guide
- Included Accessories: Edge Alignment Kit (1)-2pcs, Edge Alignment Kit (2)-1pcs, M3 screw (x1),

- RS232 daisy-chain cable, SD card cover (x1), Thumb Screw (x8)
- Stand: Universal Stand-S (BM05911)(Option)

Miscellaneous

- Warranty: 3 year warranty
- On-Screen Display Languages: English, French, German, Italian, Polish, Turkish, Russian, Simplified Chinese, Spanish, Traditional Chinese, Arabic, Japanese
- Regulatory approvals: BSMI, CB, CE, EAC, EnergyStar 7.0, FCC, Class A, PSB, UL/cUL

Philips 32BDL4031D
Version 1.0
Release Date: 2019/05/27



Issue date 2021-03-01

Version: 5.0.1

12 NC: 8670 001 57436
EAN: 87 12581 75585 0

© 2021 Koninklijke Philips N.V.
All Rights reserved.

Specifications are subject to change without notice.
Trademarks are the property of Koninklijke Philips N.V.
or their respective owners.

www.philips.com